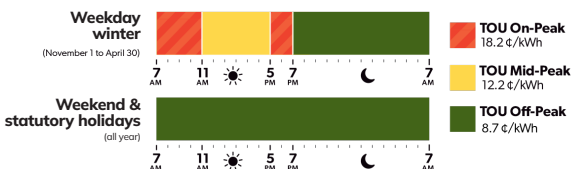


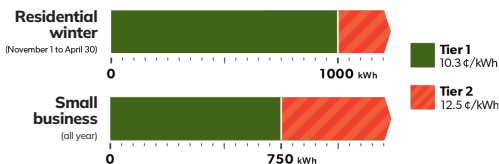


Winter electricity pricing and periods now in effect.

Winter Time-of-Use (TOU)



Winter Tier Thresholds (kilowatt hours)



Ultra-Low Overnight (ULO) Hours and Prices



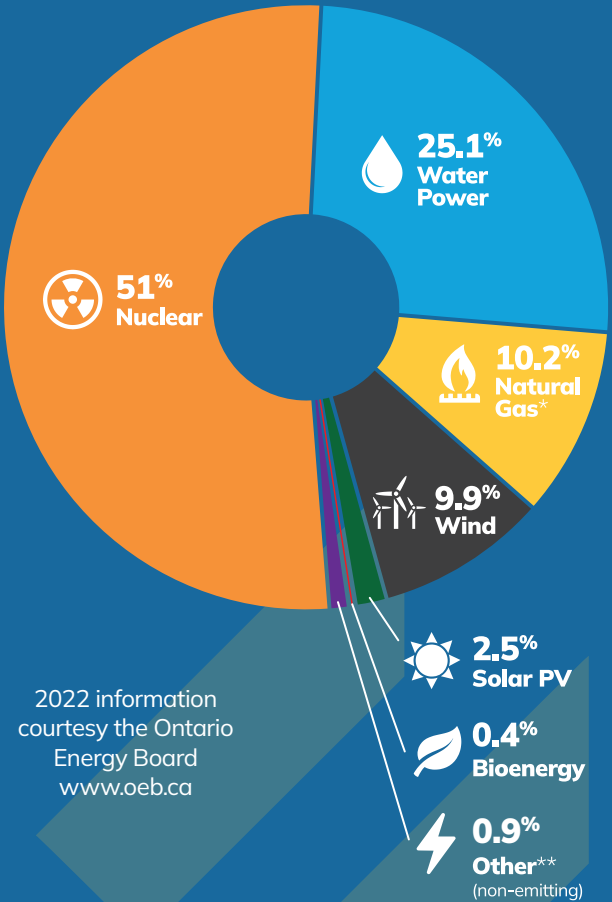
For more information on electricity pricing and the pricing plan options available to you visit:

enovapower.com/rates



Where does Ontario's electricity come from?

In Ontario, electricity is produced from a number of sources. Below is a breakdown of Ontario's system-wide supply mix for 2022.



For a near real-time supply mix breakdown, visit the Independent Electricity System Operator (IESO) website at www.ieso.ca

Notes: 1. Figures may not add to 100% due to rounding.

2. Figures do not account for the sale and retirement of Clean Energy Credits (CECs).

*Includes Lennox & dual fuel (natural gas/bioenergy) and non-contracted emitting generation consistent with IESO.

**Other represents a variety of non-contracted fuel types that the IESO is unable to categorize due to a lack of information from Local Distribution Companies (LDCs).